



**CENTRAL
HAWKE'S BAY**
DISTRICT COUNCIL

Have your say on the future of waste in Central Hawke's Bay

Statement of Proposal and
Draft Waste Management and Minimisation Plan

Consultation Document 2026



With your input, we're setting the direction for affordable, sustainable and efficient waste services that stay connected to our community.

Have your say by Monday 18 May 2026.

Contents

Introduction to this consultation document 1

Part 1
Statement of Proposal 2

Part 2
Draft Waste Management and Minimisation Plan 2026-2031 4

Where our waste goes 6

The waste situation in Central Hawke's Bay 8

The strategy and the action plan 13

Action plan 15

Funding the plan 16

Foreword

Every year people living in Central Hawke's Bay each send on average about 440 kilograms of waste to landfill. Up to 40 percent of this could be diverted through improved recycling, composting, and reuse. That's a significant opportunity for our community.

Over the past six years we have made steady progress, reducing waste to landfill and increasing diversion through recycling and other initiatives by 18 percent. This is despite major challenges including COVID-19, Government reforms and Cyclone Gabrielle. We could not have achieved this without working together as a community.

Over the next six years we need to do more to protect our environment and minimise the health risks associated with poor waste management practices.

We also recognise the key considerations for the district are affordability of waste services and ensuring services and supporting infrastructure meet community needs.

This plan recognises the need to balance building infrastructure that is right-sized for our district and working to reduce locally generated waste over time, whilst ensuring that our waste system remains commercially viable and affordable for the community into the future.

There is talent and innovation within our community and among our partners and we want to harness this to develop local solutions that will work for Central Hawke's Bay.

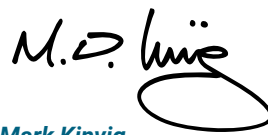
In supporting a Waste-Free CHB, we are aiming to reduce waste to landfill by 50 kg per person and increase diversion by 30 kg per person by 2031.

This is not achievable without your support. Please take the time to have your say on this plan and our direction. Your feedback will help shape the final Waste Management and Minimisation Plan, ensuring it reflects the needs and aspirations of our community.

Together we can reduce waste, protect our environment, and build a Waste-Free CHB.



Will Foley
Central Hawke's Bay Mayor



Mark Kinvig
Group Manager Infrastructure & Asset Management



Introduction to this consultation document

This document brings together the Statement of Proposal and the Draft Waste Management and Minimisation Plan (WMMP) 2026 for Central Hawke’s Bay District Council.

It has been prepared to support public consultation on the future direction of waste management and minimisation across the district, as required under the Waste Minimisation Act 2008 and the Local Government Act 2002.

The document is structured in two parts:

Part 1

Statement of Proposal

This section includes a summary of the key issues, challenges and proposed direction of the draft plan. It explains why the WMMP is being reviewed, what Council is proposing, and how you can provide feedback.

The information presented is designed to help Council and the community consider the proposed approach and its potential impacts ahead of final decision-making.

Part 2

Draft Waste Management and Minimisation Plan

This section contains the draft WMMP, including the strategic direction, goals, actions and implementation approach to guide waste services and infrastructure planning over the next six years.

The WMMP guides future decisions but does not make final decisions on projects, funding, or services. Any significant investment or service decisions arising from the plan would be subject to further business case development and future consultation.

Council is seeking community and stakeholder feedback to help shape the final WMMP before it is presented for adoption. We encourage you to review the information provided and have your say.

Central Hawke's Bay District Council respectfully acknowledges the Mana Whenua of Tamatea - Central Hawke's Bay as kaitiaki of te taiao and recognise their role in protecting and sustaining the natural environment. Their perspectives will help inform this plan.

We remain committed to fostering and strengthening our partnership with mana whenua.

Statement of Proposal

What are we proposing?

Central Hawke's Bay District Council is proposing to amend its existing Waste Management and Minimisation Plan (WMMP) to address the key challenges the district will face over the next six years.

What is the WMMP?

The WMMP sets out our strategy, goals and actions for how we will manage and reduce waste over the next six years. It is a legislative requirement to review our plan every six years.

Why amend our current WMMP?

Our current WMMP was adopted in 2019 and has been reviewed through the Central Hawke's Bay Waste Assessment 2025. The assessment outlines our current waste situation, the rules we operate under, and what future waste needs may look like. It also reviews our performance against the 2019–2025 WMMP and identifies what we need to consider or change in the current environment to support continued progress.

In December 2025, Councillors received the Waste Assessment and agreed to begin updating the current WMMP.

There are several reasons why the current plan needs to be updated:

- Significant changes in national waste policy and strategic direction.
- The need to balance waste services with long-term affordability for households.
- Planning for future waste infrastructure, particularly with the district landfill requiring new consent by 2030.
- The need to strengthen local and regional partnerships to help achieve our waste minimisation goals.

How we've developed the WMMP

Over the past 18 months, we've been reviewing the waste needs of our district – listening to the perspectives of mana whenua, waste operators and the wider community on waste management and minimisation.

In March 2025, the Council team undertook a workshop to help define the core challenge we face as a Council and community today:

How do we keep waste services affordable and sustainable?

Through this process, we identified three key measures of success:

- Waste services remain affordable and financially sustainable long-term
- Waste is managed in ways that minimise environmental impacts, and
- Waste services are supported by our community, stakeholders and partners.

Following this work, Councillors agreed that the existing WMMP needed updating to reflect this evolving strategic direction. Since then, we've developed a draft WMMP alongside an updated Waste Assessment to consult on with the community.



Why update the plan?



National policy direction has changed



Services must remain affordable long term



Future landfill consenting is required



Stronger partnerships are needed to meet waste goals



Have your say on this plan

We'd like to hear your views on the draft plan. Your feedback will help us make sure it reflects the needs and priorities of our community.

Public consultation runs from Friday 17 April to Monday 18 May 2026.

Public feedback will be heard and considered by Council at a hearing on Thursday 4 June 2026.

Ways to have your say

- **Online:** Visit letstalkchb.co.nz or scan the QR code to read the document and make a submission.
- **Email:** Send your feedback to wmmp@chbdc.govt.nz
- **Post:** WMMP Submission, Central Hawke's Bay District Council, PO Box 127, Waipawa 4240
- **In person:** Drop off your submission at the Waipawa Office, Waipawa Library, or The Knowledge and Learning Hub - Te Huinga Wai.



If you need help or would like a printed copy of the document, visit any of the locations above and our team will assist you.

You can request to speak to your submission at a Council hearing on Thursday 4 June 2026. Please indicate this in your submission and we'll be in touch to arrange a time.

If you'd prefer to talk with us in person, feel free to contact us and we can arrange a meeting.

Please submit your feedback by Monday 18 May 2026.

Key Dates

Consultation opens
17 April 2026

Public consultation begins and submissions open. The consultation period will run for four weeks.



Public consultation closes
18 May 2026

We need to hear from you by Monday 18 May 2026.



Hearings
4 June 2026

Public feedback will be heard and considered by Council.



Deliberations and adoption
18 June 2026

Council will deliberate on submissions and consider adoption of the final Waste Management and Minimisation Plan.

Draft Waste Management and Minimisation Plan 2026-2031

What this plan does and how it will guide waste services

Most of the things we buy and use create waste. Managing this waste costs money and, if not handled properly, can harm people's health and the environment. Council has a legal responsibility to manage waste and promote waste minimisation in Central Hawke's Bay under the Waste Minimisation Act, and to protect public health under the Health Act 1956. The Waste Management and Minimisation Plan (WMMP) is the key tool Council uses to meet these responsibilities.

What the plan covers

This WMMP covers solid waste and diverted material generated in Central Hawke's Bay. While Council does not directly manage all waste, we have a responsibility to consider waste across the district and identify where action can be taken by others.

Under the Waste Minimisation Act, the following definitions apply:

- Waste is material that has no further use and is disposed of.
- Waste minimisation means reducing waste and increasing reuse, recycling and recovery.
- Diverted material is material that still has value and is reused or recycled instead of going to landfill.

This plan sets the direction and priorities for managing and reducing waste in Central Hawke's Bay over the next six years. It does not make final decisions on major changes to waste infrastructure or services. Any significant decisions will be informed by further work and consulted on with the community.

Council will lead the delivery of waste services, working in partnership with mana whenua, the community, businesses and industry. Actions in the WMMP will be delivered through Council's Long-Term Plan and Annual Plans.

How waste is managed

Managing waste requires balancing environmental protection, public health and affordability for the community. Achieving better outcomes will require shared effort from everyone.

The WMMP follows the waste hierarchy, which prioritises reducing waste first, then reusing, recycling and recovering materials before disposal to landfill.

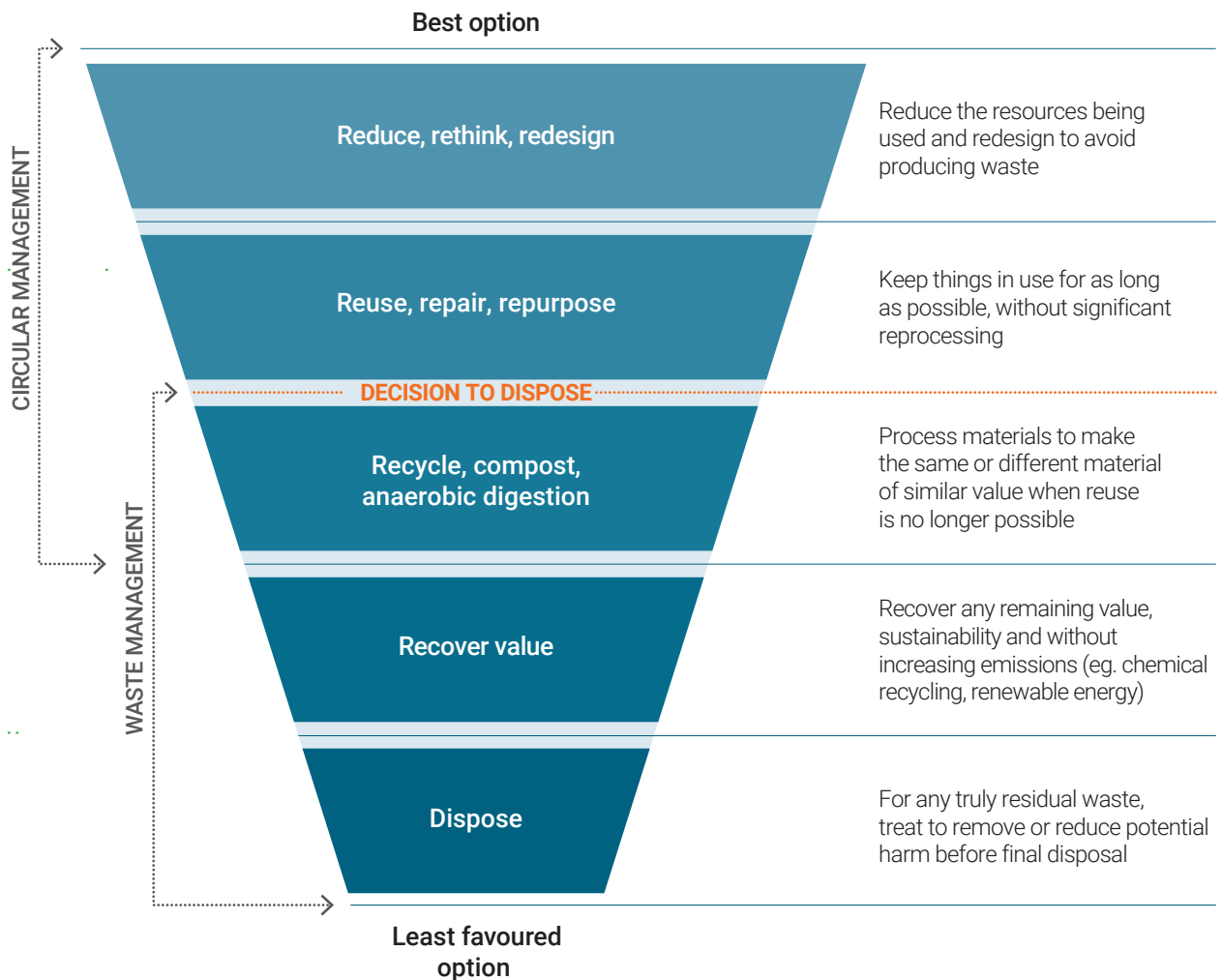
National, regional and district priorities

This WMMP has been prepared in line with the Waste Minimisation Act and is aligned with the following national, regional and district policies and priorities:

- Relevant national strategy and targets in the New Zealand Waste Strategy, including the waste hierarchy, and climate change strategy
- Our commitment as a member of the Regional Council Climate Action Joint Committee to make Hawke's Bay carbon neutral by 2050. With waste contributing around 2 percent of greenhouse gas emissions regionally, waste management practices that consider emission reduction practices need to be part of the plan, and
- The three main Central Hawke's Bay's Elected Member Priorities for the 2025-2027 triennium:
 1. Affordable and sustainable services
 2. Best value from every dollar
 3. Connected to our community.

There are other council strategies and management plans that are important for this plan, including our Environment and Sustainability Strategy, Environmental Waste Asset Management Plan and the Long-Term Plan and Annual Plans for funding.

New Zealand waste hierarchy



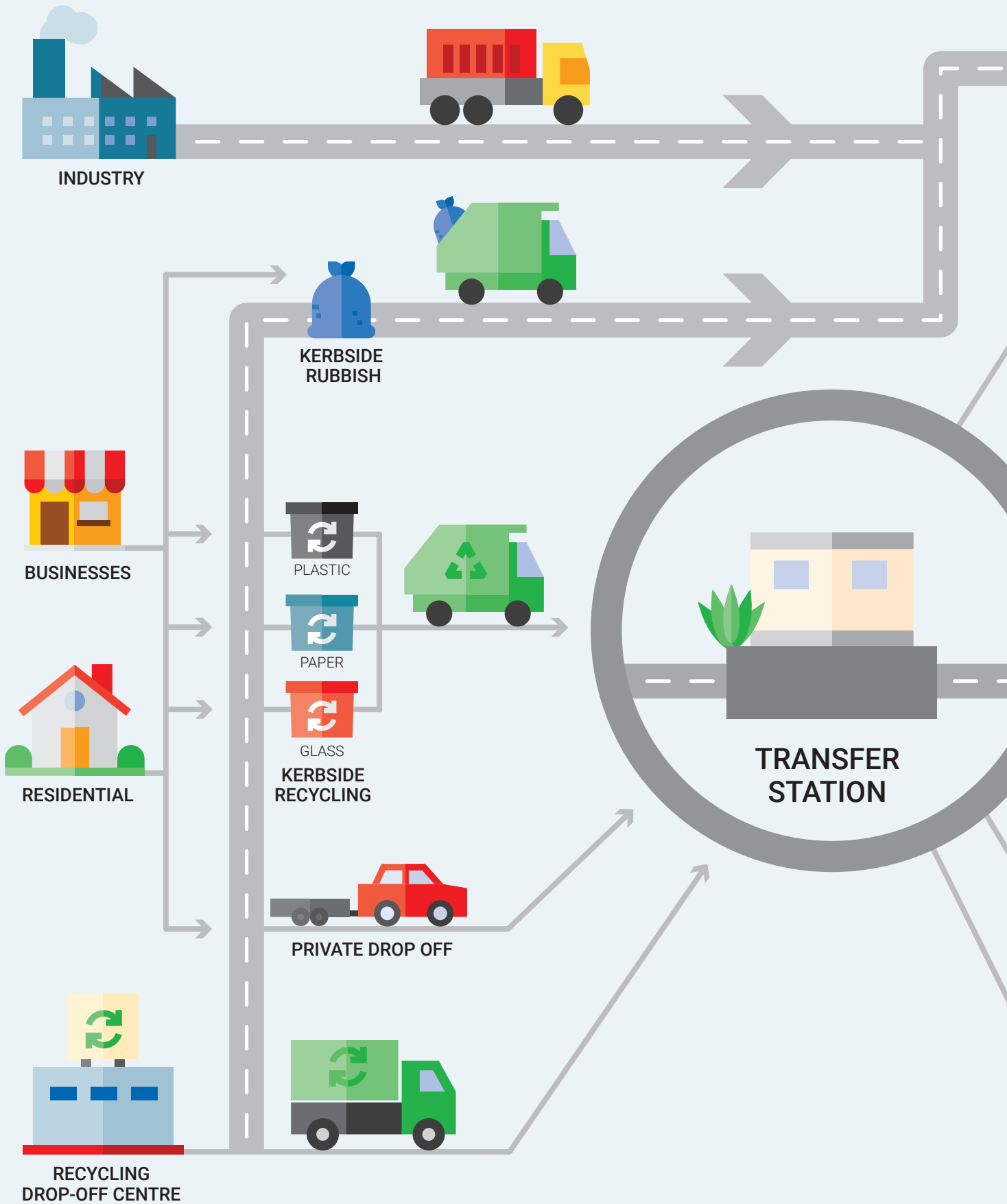
Source: Ministry for the Environment 2023.
Te rautaki para / Waste strategy.

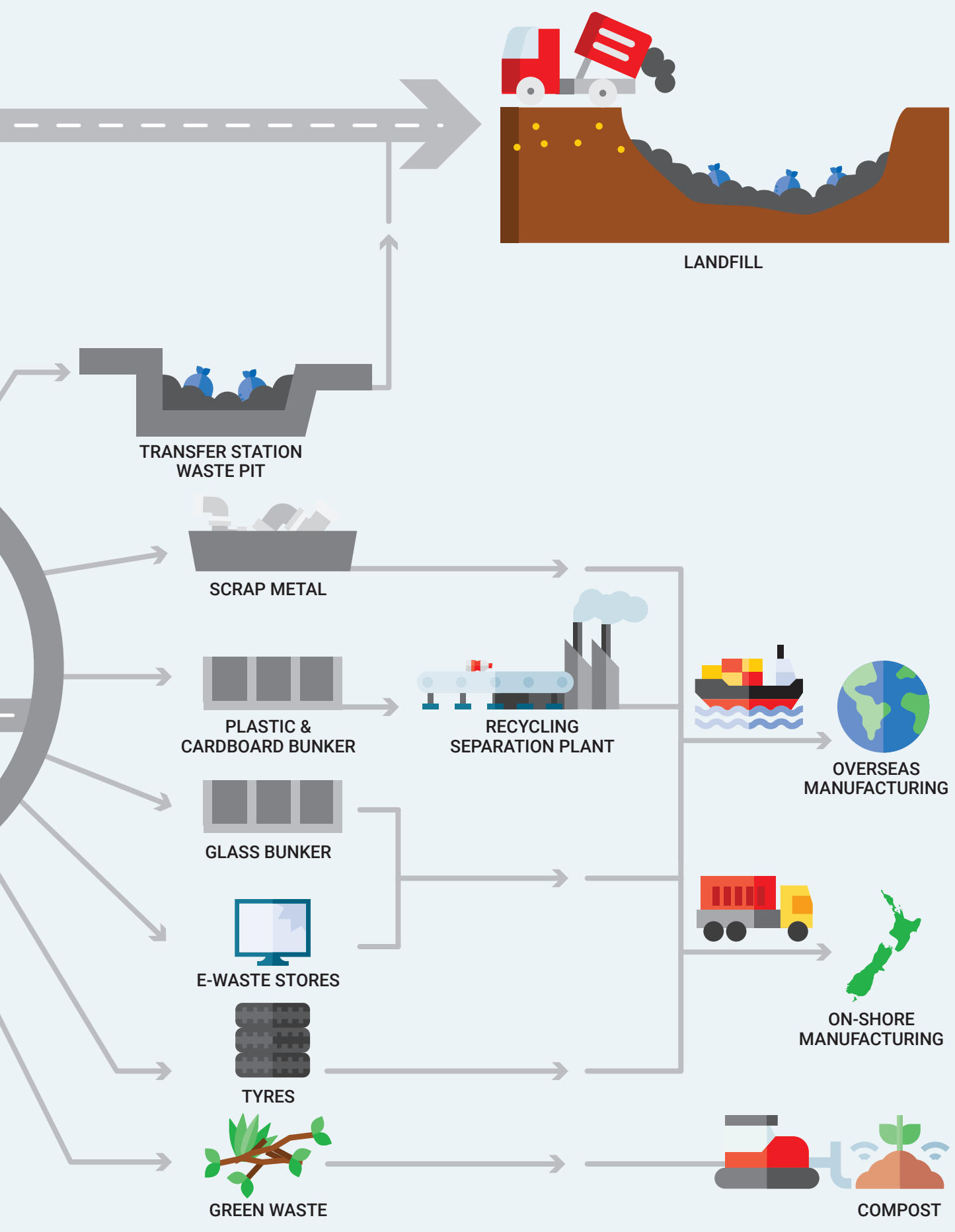
This plan is aligned with the waste hierarchy (above) and the New Zealand Waste Strategy, which focuses on these outcomes:

- Reduction of waste disposal per person.
- Increasing reuse and recycling of materials and products so that we retain valuable resources in the economy.
- Minimising emissions and environmental harm from waste and litter.
- Ensuring resource recovery and disposal facilities are managed to minimise their environmental impacts.
- Limiting the environmental harm caused by contaminated sites, including legacy sites.

DRAFT

Where our waste goes





The waste situation in Central Hawke's Bay



Recycling and diversion in Central Hawke's Bay increased by around 18 percent between 2022/2023 and 2024/2025

How we are performing

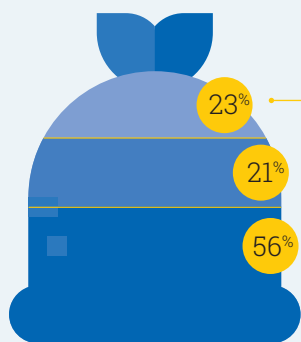
Over the last six years, Central Hawke's Bay has made steady progress to minimise and reduce waste. The 2019 plan focused on the following:

- Raising community awareness about waste minimisation options
- Improving the effectiveness of kerbside collection services
- Exploring opportunities for new organic collection services
- Improving waste data and local regulation
- Reviewing the performance of the Council's landfill
- Enhancing waste and recycling services for rural communities.

The Council achieved success in several key areas:

- Recycling and diversion in the community increased from 821 tonnes in 2020/2021 to approximately 1,900 tonnes in 2024/2025
- Ensuring the landfill fees recover the costs of operations
- Expanded kerbside refuse and recycling services to smaller urban communities
- Introduced a recycling trailer service to rural communities
- Improved data collection through the introduction of weight-based pricing, and
- Supported locally led new waste minimisation initiatives eg Salvage Workshop; local composting trials and the child car seat reuse programme.

Progress was hampered by the impact of COVID-19, changing government policy, and the significant shift in focus, including financial, following Cyclone Gabrielle.



Carbon costs set by the markets

Waste disposal levy set by Central Government

Rates, fees and charges set by Council to recover the costs of waste services

What makes up the cost of disposal?

Waste disposal costs include a carbon charge, which helps offset the carbon footprint of waste and is set through the carbon market, and a waste disposal levy set by the Government. These charges are applied nationally. The remaining portion of the fee is what the Council can control. This covers the Council's costs to provide waste services and operate and maintain local waste infrastructure.

Waste to landfill

In Central Hawke’s Bay, most waste is disposed of at the Council-owned landfill. The majority is from households.

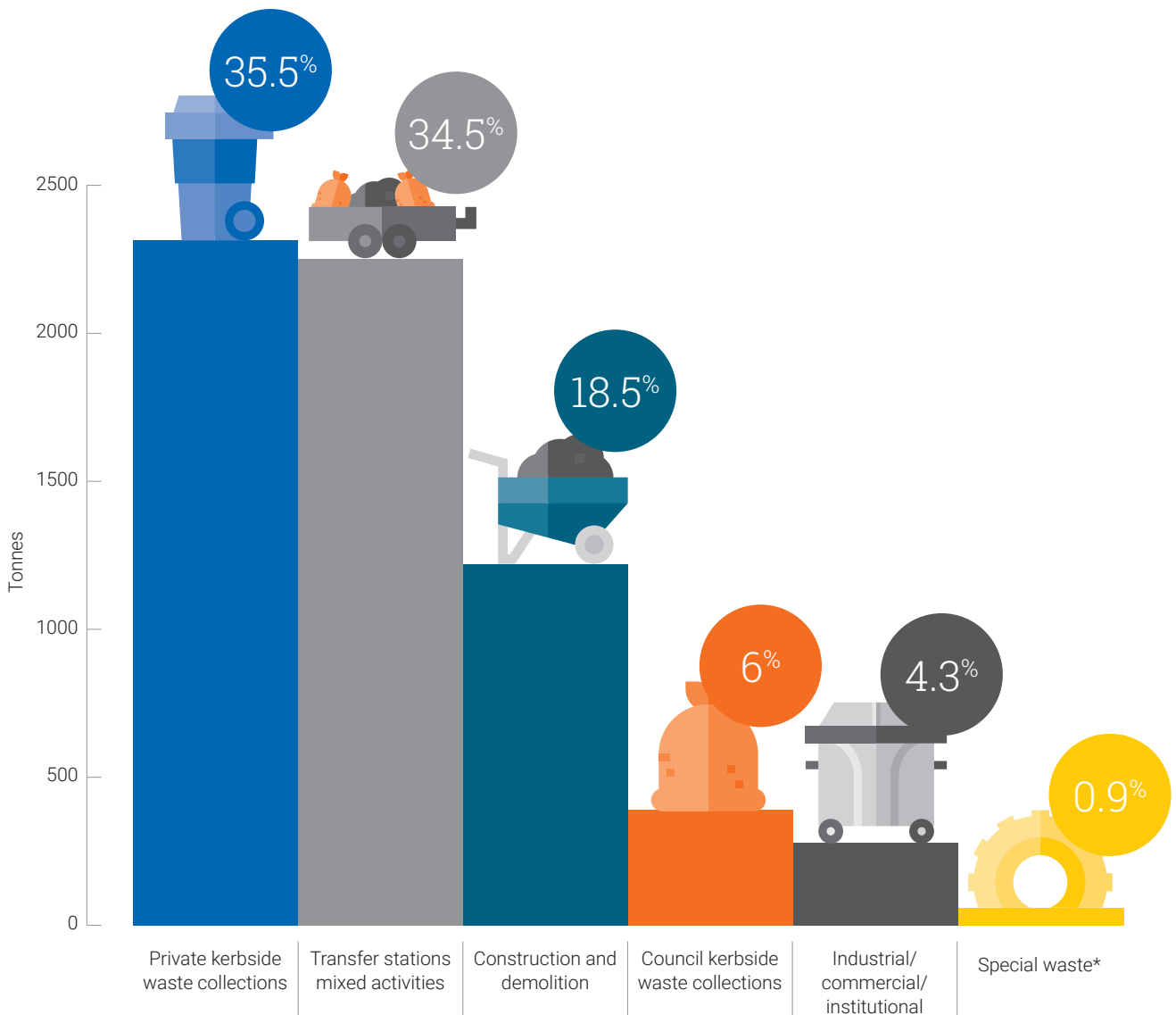
Waste going to landfill from Central Hawke’s Bay has reduced in the last three financial years overall from 7,015 tonnes in 2022/2023 to 5,725 tonnes in 2024/2025. This equates to around 440 kg of waste generated per person per annum.

Construction and demolition waste represents a notable share with between 400-600 tonnes disposed at the landfill annually. The following table shows the breakdown of waste:



Waste going to landfill decreased by just over 18 percent over the same period.

Estimated tonnes per year based on the in-district waste to landfill data over the last 3 years.



* Special waste is defined as unusual waste such as asbestos or contaminated soils.



Up to 40 percent of locally produced landfill waste could be diverted through better recycling, composting, and reuse.

Waste composition at landfill

Our revised waste audit shows that around 40 percent of the material sent to landfill from waste generated locally could be diverted through recycling, composting or reuse.

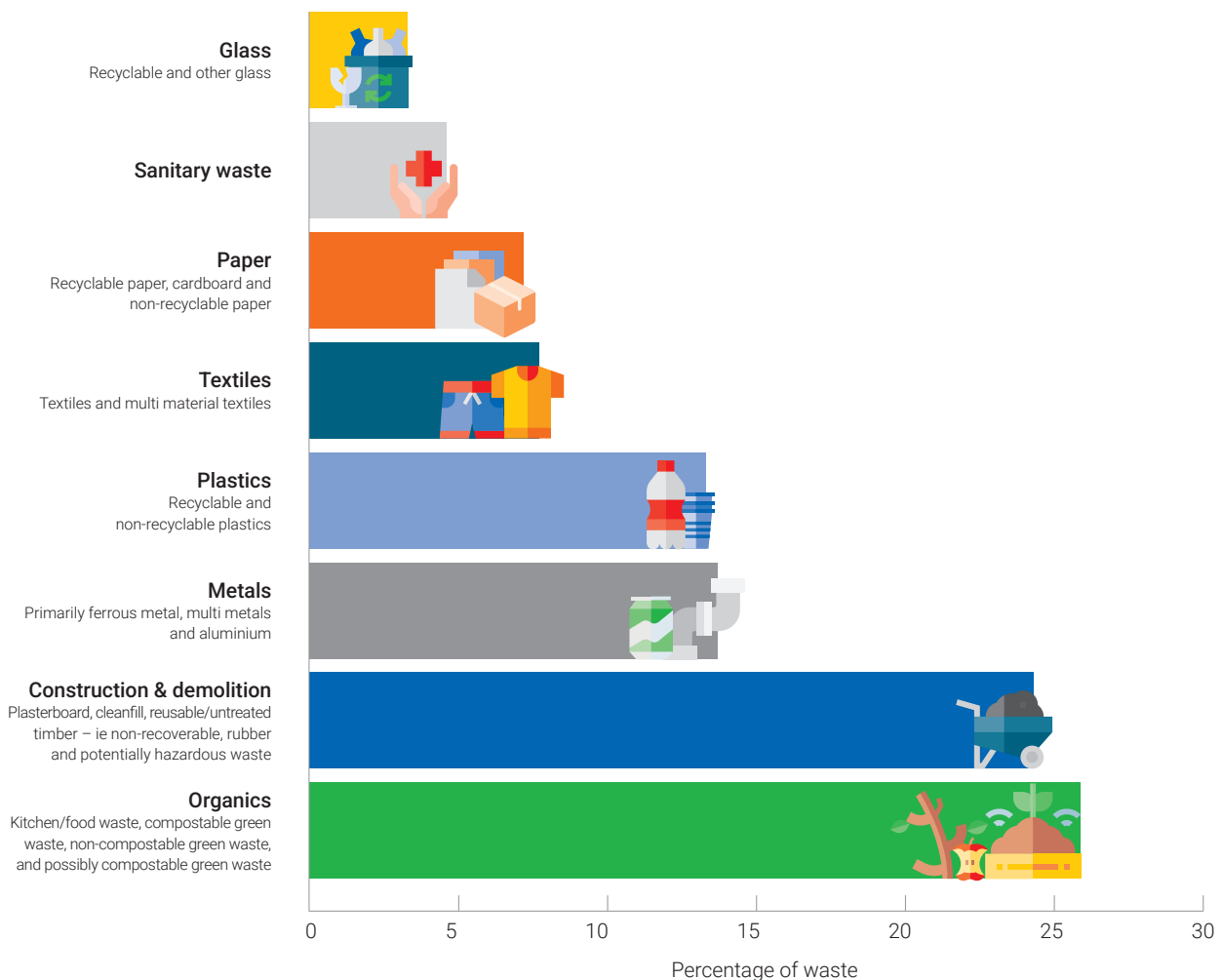
Locally-sourced waste is waste that is produced in the district and ends up at our landfill through the private or council kerbside service, waste from the transfer stations or waste directly sent to the landfill from industry and construction activity.

Organic waste, including food and garden waste, makes up a significant share of landfill waste.

These findings indicate significant opportunities to reduce landfill disposal:

- Improve participation in existing recycling services
- Consider new organic waste diversion options
- Encourage consumers to choose products that generate less waste, and
- Adjust services, such as our collection methodology, to make it easier to divert waste.

District-sourced waste composition at the district landfill



Waste diverted from landfill: recycling and reuse across the district

Each year, a lot of material is diverted from landfill – around 95 kg per person – through recycling services such as kerbside collection, drop-off points, recycling trailers and other diversion programmes.

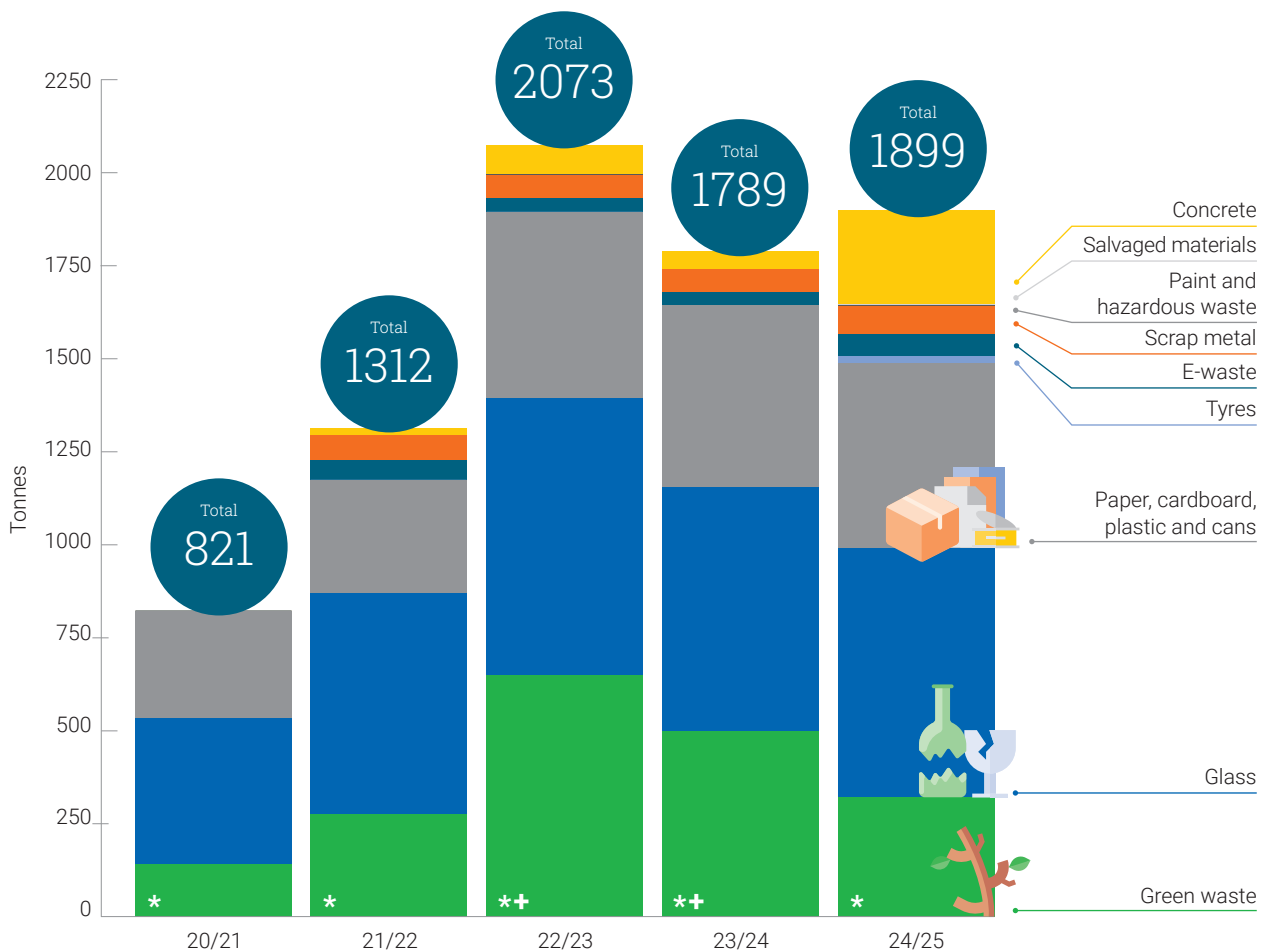
Other waste diversion services are available at Council transfer stations in Waipukurau and Pōrangahau. These include green waste, tyres, e-waste, scrap metal, salvaged materials for upcycling, paint and hazardous waste. Since moving to charging by weight at the Waipukurau Transfer Station, we've also been able to collect more accurate waste data.

Additional initiatives include free recycling bins for events, funded waste reduction education programmes in schools, support for reuse and repair initiatives, and recovery schemes such as Agrecovery. Council also supports one-off events, including Hazardous Waste Day.



Around 95 kg of waste per person is diverted from landfill every year.

Waste diverted from landfill over the last 5 years

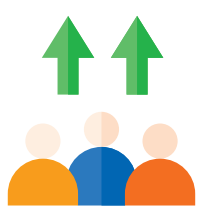


* Green waste data has been estimated by converting volumes (m³) to tonnes. CHBDC now charges for green waste by weight, providing more accurate tonnage data.

+ Tonnages of green waste artificially high due to the impacts of Cyclone Gabrielle.

Future waste demand

The population of Central Hawke's Bay is estimated to grow to more than 19,000 people by 2033. The district will need to manage more waste as the population increases. To meet our proposed waste reduction targets from 440 kg per person per year to 390 kg per person we need to make an achievable 2 percent reduction per year.

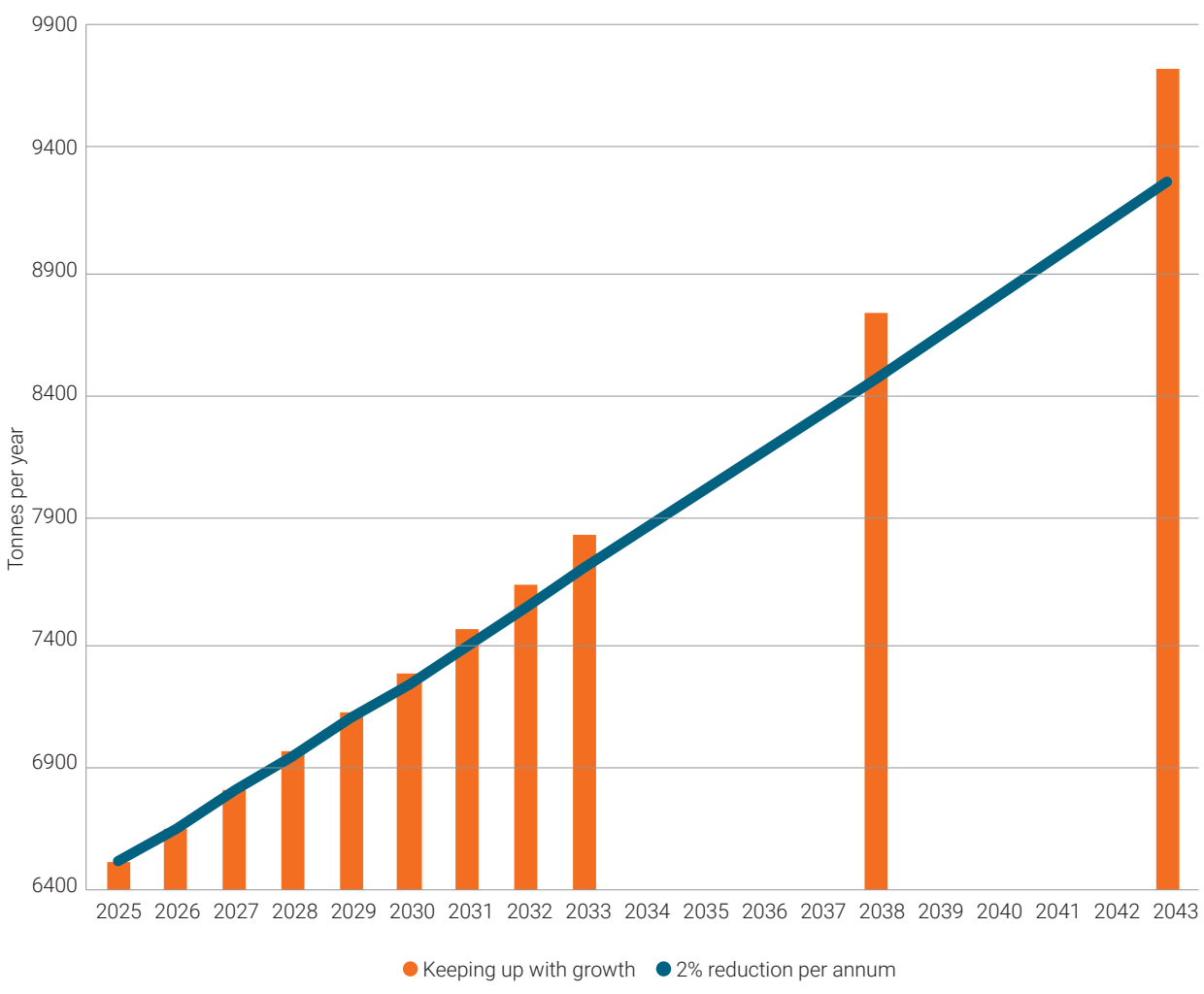


Population growth = rising waste demand 19,000+ people by 2033.



To meet our proposed targets, we must reduce waste from 440 kg to 390 kg per person, per year — an average 2 percent reduction annually.

Future waste projections



The strategy and the action plan

Current environment and challenges

This plan was developed in a more challenging environment than the previous WMMP. Higher inflation, rising borrowing costs and changing central government priorities mean Council needs to take a more considered approach to ensure waste services remain affordable and effective now and into the future.

To help shape the plan, Council held a workshop in March 2025. It identified that rising waste service costs are not financially sustainable in the long-term and highlighted the need to review current service levels and delivery models.

The workshop acknowledged a significant upcoming decision for the community regarding the future of the district landfill, with its consent expiring in 2030. The landfill's long-term viability, including constrained tonnage and its influence on overall service costs, will be a key consideration in the next six years.

Achieving the community's aspirations for increased waste diversion will need investment in new services and infrastructure. The workshop emphasised the need for these decisions to be based on robust technical and economic analysis, and for partners and the wider community to be actively involved in shaping solutions.

The core challenge is:

How do we continue to provide affordable community waste services while protecting our environment?

Three success criteria were identified:

- #1** Solid waste services are affordable and financially viable long-term
- #2** Waste management solutions minimise environmental impacts
- #3** Waste services are supported by the community, stakeholders and partners.

These align with elected member priorities of affordable and sustainable services, best value for money, and strong community connection.

Our waste services must:

Be affordable and financially viable long-term



Minimise the impact waste has on our environment



Be supported by the community and our partners.



DRAFT

Our vision and focus for the next six years

Our vision for “A Waste Free CHB” remains. This vision is not about achieving zero waste overnight; it’s about changing how we think about waste, reducing what we throw away, using resources more wisely, and working together as a community. Doing this helps protect our health and our environment and will reduce costs over time.

Our vision for waste management and minimisation: A Waste Free CHB

Goal #1

Solid waste services are affordable and financially viable for the long-term

Goal #2

Waste management solutions seek to minimise the impact of waste on the environment

Goal #3

Waste services are supported by the community, stakeholders and partners

Proposed targets

1. Reduce district sourced waste to landfill from 440 kg to 390 kg per person per year by 2031
2. Increase diverted materials through Council associated waste services from 95 kg per person per year to 125 kg per person per year by 2031
3. The number of unauthorised dumping incidents reported to the Council is less than 35 incidents per year



Action plan

Council's actions for the next six years are organised under key focus areas that have been summarised and consolidated from the Waste Assessment 2025.

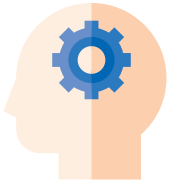
Focus #1



Community engagement and partnerships

Working together with mana whenua, Health NZ, local interest groups, local businesses, our community and regional partners to reduce waste through shared knowledge, collaboration and locally-led minimisation projects.

Focus #2



Education and behaviour change

Using education and regulation to support better waste choices and reduce waste.

Focus #3



Right-sized infrastructure

Ensuring our waste and recycling infrastructure is reliable, financially viable and fit-for-purpose, now and into the future. This includes a decision on the district landfill and how our transfer stations are managed and operated.

Focus #4



Doing things smarter

Identifying efficiencies and making every dollar count through improving value and cost efficiencies in Council's waste services.

Focus #5



Building internal capability

Supporting our team and improving the way Council works so services are delivered efficiently and resources are used well.

Funding the plan

The initial work to inform these decisions is likely to require one-off funding from a combination of user charges, rates (including targeted rates for specific services), Government waste levy funding, external grants and existing resources.

The results from these actions may lead to cost savings and be absorbed within existing budgets, while others may require ongoing funding through general or targeted rates to support the service.

Any significant decisions to implement changes would be made through formal Council processes, such as the Long-Term Plan.



Focus #1

Community engagement and partnerships

ACTION	EXISTING OR NEW ACTION	FUNDING	TIMEFRAME
Partnership with mana whenua			
Work with mana whenua to support marae-based waste diversion and resource recovery initiatives.	New	Waste levy returns	Ongoing
Collaborate with mana whenua on waste messaging and engagement that reflects Te Ao Māori principles.	New	Waste levy returns & existing resources	Ongoing
Partner with mana whenua and local construction businesses to identify targeted resource recovery and reuse opportunities.	Existing	Waste levy returns & existing resources	Ongoing
Community-led collaboration and solutions			
Establish a Waste Futures Forum to bring together mana whenua, Health NZ, social services and other stakeholders to collaborate on waste management and minimisation matters.	New	Existing resources	Before 2028
Work with social service providers to identify and address the underlying causes of illegal dumping, including financial hardship.	New	Existing resources & external grants	Before 2030
Engage with businesses, industry, and rural and urban residents to identify barriers to waste minimisation and opportunities for improvement.	Existing	Existing resources	Before 2028
Offer free waste assessment audits to identify quick wins and effective waste diversion strategies.	New	Waste levy funding & existing resources	Before 2028
Work with partners to initiate pilot projects for targeted resource recovery, like the child seat reuse programme with the Parenting and Pregnancy Hub.	Existing	Waste levy funding & external grants	Ongoing
Regional and cross-council collaboration			
Work with Hastings District Council and Napier City Council to explore regional, cost-effective options for organic, and construction and demolition waste diversion.	Existing	Waste levy funding & existing resources	Before 2030



Focus #2

Education and behaviour change

ACTION	EXISTING OR NEW ACTION	FUNDING	TIMEFRAME
Clear, consistent and engaging education			
Review the design and branding of Council waste infrastructure (such as litter bins and recycling drop-off centres) to ensure clear messaging, encourage correct use and support community engagement.	New	Waste levy funding & existing resources	Before 2030
Coordinate waste minimisation education for the district amongst waste minimisation service providers, aligning theory with practice applications for more effective lessons.	Existing	Waste levy funding & existing resources	Before 2030
Create a waste minimisation event calendar.	Existing	Waste levy funding & existing resources	Before 2028
Create clear and engaging waste management and minimisation videos.	Existing	Waste levy funding & existing resources	Ongoing
Regulation, policy and compliance			
There is no licensing system currently to prevent private operators from collecting waste within the district and disposing the waste outside the district, which results in the Council losing revenue to support waste services. Licensing can help control this, but enforcement may be challenging.	Existing	Existing resources initially. User charges post implementation	Before 2030
Adopt a litter control policy to address unauthorised dumping to address legislation, training and enforcement.	New	Existing resources initially. User charges post implementation.	Before 2030
Leading by example through procurement			
Explore embedding waste minimisation measures and targets in Council procurement processes.	Existing	Existing resources	Before 2030



Focus #3

Right-sized infrastructure

Action	Existing or new action	Funding	Timeframe
Future landfill planning: preparation for decision by 2028			
<p>With the landfill consent expiring in 2030, Council will prepare the information needed to support a decision by 2028.</p> <p>This will include refining the business case, exploring opportunities and risks associated with shared waste disposal arrangements with neighbouring councils to improve economic viability and assessing alternative disposal options.</p>	New	Rates & existing resources initially. User charges if implemented.	Before 2028
Concept design for Waipukurau Transfer Station			
The Waipukurau Transfer Station is due for replacement in 2033. Council will develop a concept design, including assessing options for alternative locations if required.	New	Waste levy & existing resources	Before 2028
Reprioritise Waipukurau Transfer Station replacement if Council opts not to renew landfill consent.	New	External grant & rates initially. User charges post implementation	After 2028
Composting and green waste options at landfill sites and transfer sites			
Complete feasibility assessments for green waste composting at closed landfill sites.	New	Waste levy returns initially. User charges if implemented.	Before 2030
Review feasibility of formalising green waste composting trials the Waipukurau Transfer Station.	Existing	Waste levy returns initially. User charges post implementation.	Before 2028
Establish a local zero-waste hub			
Create a centralised hub for local organisations and businesses promoting waste diversion where they could meet, exchange ideas and coordinate efforts.	Existing	Waste levy returns	Before 2030



Focus #4

Doing things smarter

Action	Existing or new action	Funding	Timeframe
Reviewing services for efficiency and value			
Review key waste services to ensure they meet current and future needs and are delivered in a cost-effective way.			
Kerbside collections: assess delivery models and methodologies, including through a Section 17A review.	New	Existing resources. initially. Targeted rates post implementation.	Before 2028
Rural recycling trailers: address capacity issues and assess the feasibility and cost of permanent drop-off facilities.	Existing	Waste levy returns initially. Rates post implementation.	Before 2028
Rural kerbside refuse and recycling collections: Explore whether we can expand these services affordably.	New	Waste levy returns initially; targeted rates post implementation.	Before 2028
Transfer stations and landfill hours: review operating hours to better align with demand and identify potential savings.	Existing	Existing resources	Before 2028
Household hazardous waste: review the annual service model and assess options for a year-round service without increasing overall cost.	Existing	Waste levy returns initially. User charges post implementation.	Before 2028
Look at feasibility of a kerbside organics collection service.	Existing	Waste levy returns initially. Targeted rates if implemented.	Before 2030
Making better use of Council assets			
Evaluate options and potential return on investment from leasing closed landfill sites.	New	Existing resources.	Ongoing
Reviewing funding and revenue streams			
Review revenue and finance policies for waste services, including how costs are recovered from large waste producers, to ensure funding settings are fair, sustainable and reflect true disposal costs.	New	Existing resources	Ongoing
Reuse more materials in Council projects			
Explore opportunities to reuse roading and civil infrastructure waste within Council projects to reduce disposal costs.	New	Existing resources.	After 2028



Focus #5

Building internal capability

Action	Existing or new action	Funding	Timeframe
Improving waste data and evidence			
Review and improve Council's waste data collection systems, including software and processes, to better understand waste flows and trends.	Existing	Existing resources initially. User charges if implemented.	Ongoing
Work with businesses and industry to improve the quality and consistency of waste data captured across the district.	New	Existing resources	After 2028
Complete a literature review on waste-to-energy options to clarify their potential role as a waste disposal solution for Council.	New	Existing resources	Before 2028
Building staff knowledge and capability			
Upskill staff to understand internationally proven waste minimisation policies, legislation and best practice, including product stewardship schemes.	New	Waste levy returns	Ongoing
Build capability to respond to emerging waste streams, such as solar panels and PFAs, to ensure safe disposal and protect the community.	New	Waste levy returns	After 2030
Commission a study to explore in-district organic waste diversion processing, including possible links with existing processing options available or planned by local industry.	Existing	Waste levy returns	Before 2030

Monitoring and evaluating progress

This WMMP sets out a programme of actions, timeframes and proposed waste minimisation targets. To ensure the Plan remains relevant, Council will review it at least every six years. Prior to each review, a waste assessment will be undertaken to assess the waste management system, as required by the Waste Minimisation Act, and community consultation will ensure input into the plan.



For more information or if you have a question, contact the Council at 06 857 8060

Email:
wmmp@chbdc.govt.nz

or visit our website:
www.chbdc.govt.nz

